



First Hawaiian Bank.

**FHB Commercial Online
(FCO) Enhancements!**

Loan Payments

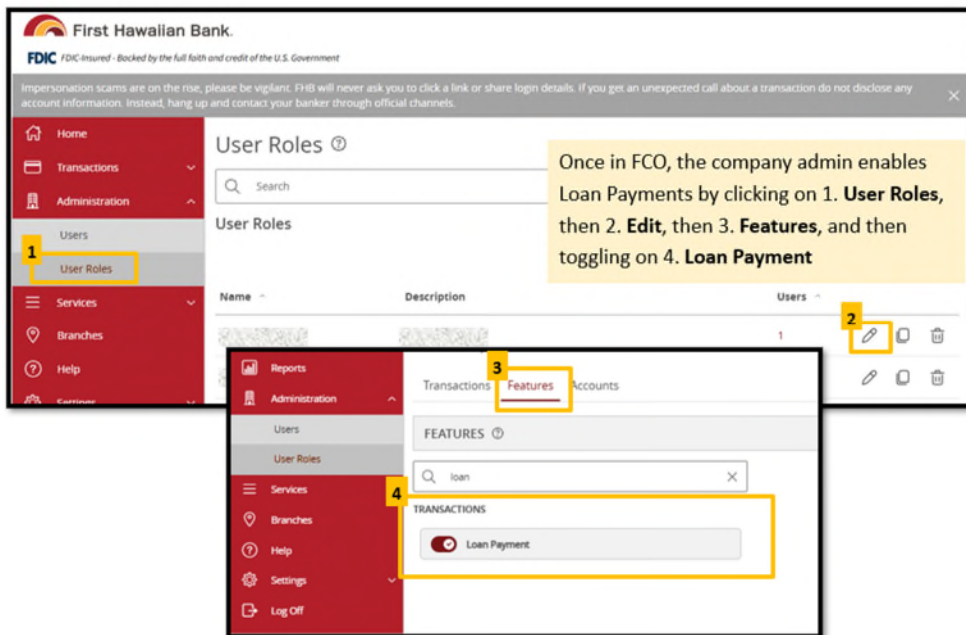
Mobile Deposit

Access CentreSuite

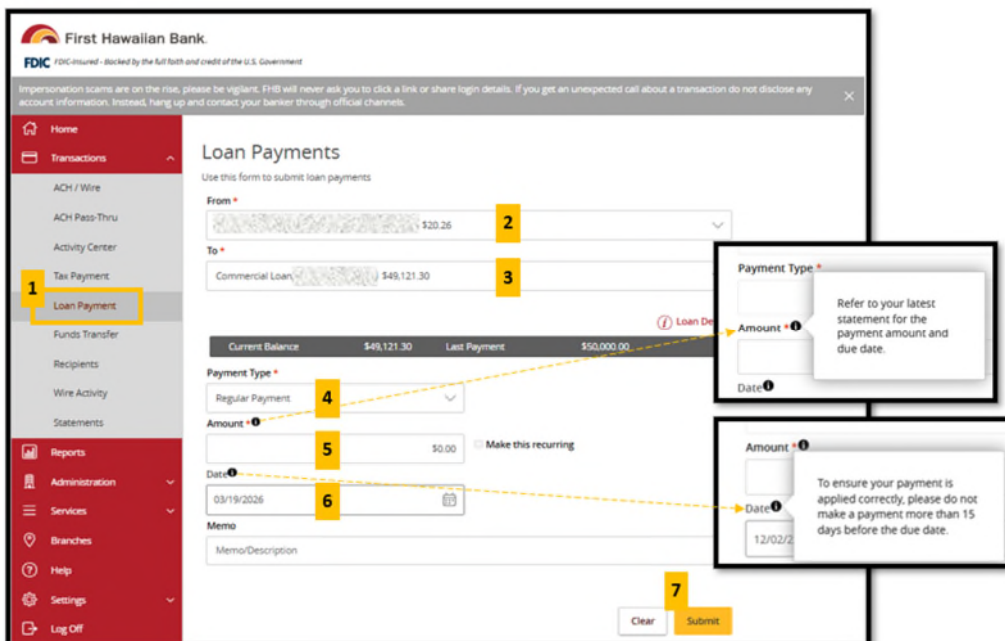
Loan Payments*

Make loan payments on your commercial loans!

- 1. Enable Loan Payment Feature:** FCO company admins can enable the loan payment feature to user roles by following the below instructions. If you do not have a company admin, please reach out to your banker to request the service.



2. Loan Payment User Experience

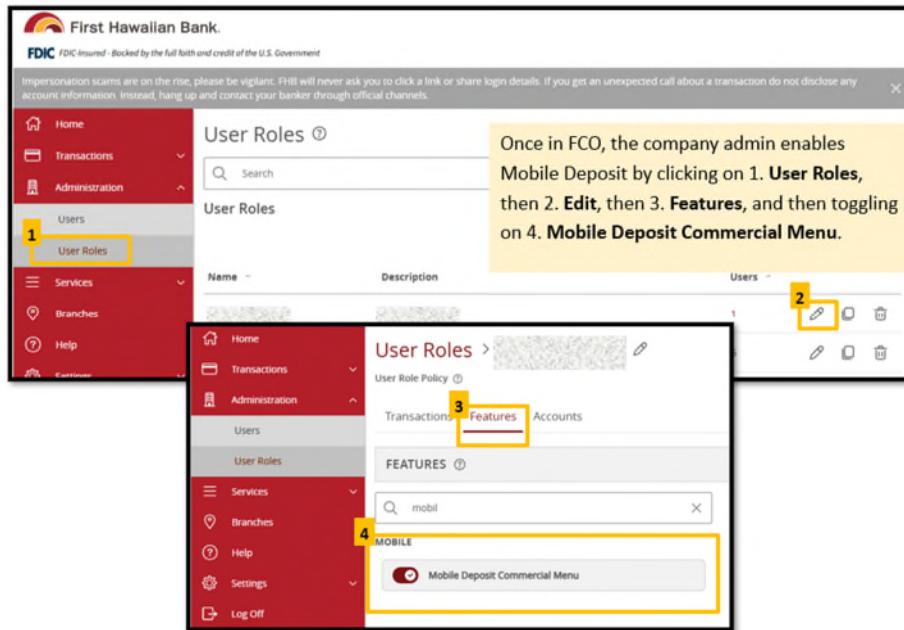


*Commercial loan payments only. Commercial real estate, lines of credit, and credit card payments are not currently available.

Mobile Deposits

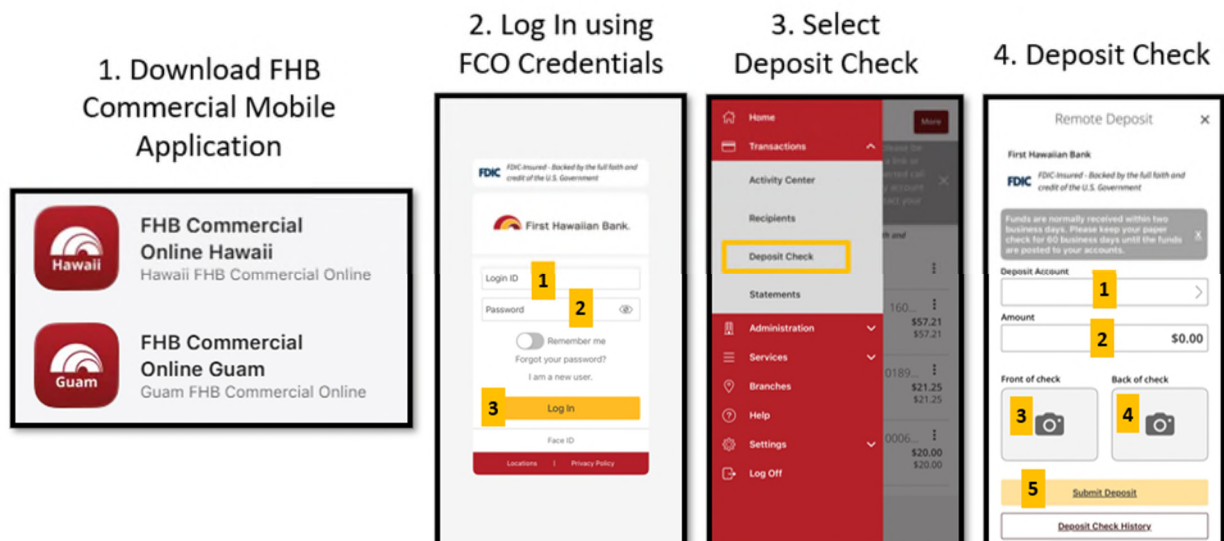
Deposit checks from home, work, or on the road just by taking a photo with the FHB Commercial Mobile app – Up to \$50,000 per day!

- 1. Enable Mobile Deposit Feature:** FCO company admins can enable the mobile deposit feature to user roles by following the below instructions. If you do not have a company admin, please reach out to your banker to request the feature.



2. Mobile Deposit User Experience

- Cut-off time is 5pm HST/ 1pm ChST for same day deposit on normal banking days.

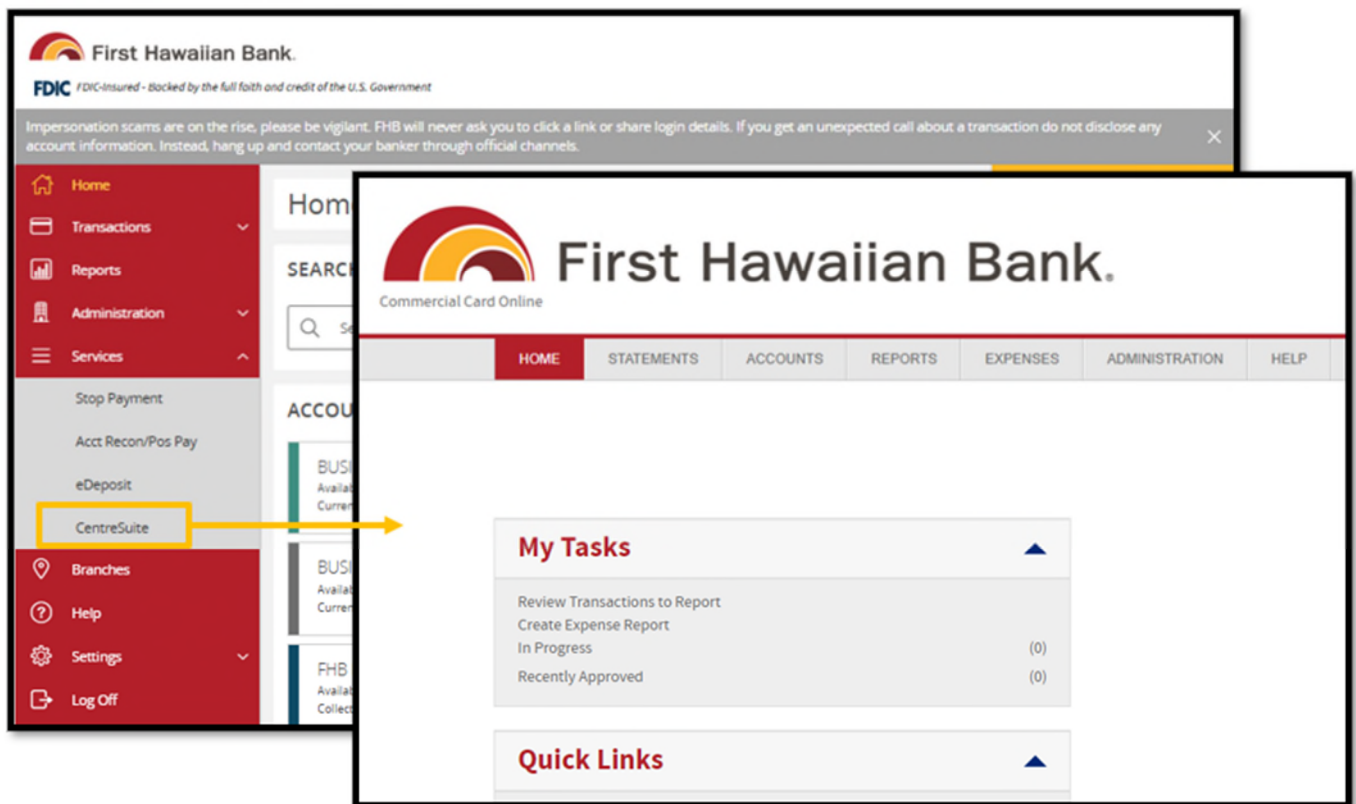


Access CentreSuite* (Commercial Credit Card Platform) Directly from FCO

1. Enable service:

- a. Contact your banker.
- b. Fill out/sign/return the application.
- c. Treasury Management Servicing will provision your account and notify you once complete.

2. Access CentreSuite User Experience



* This service is currently available to our Hawaii customers.